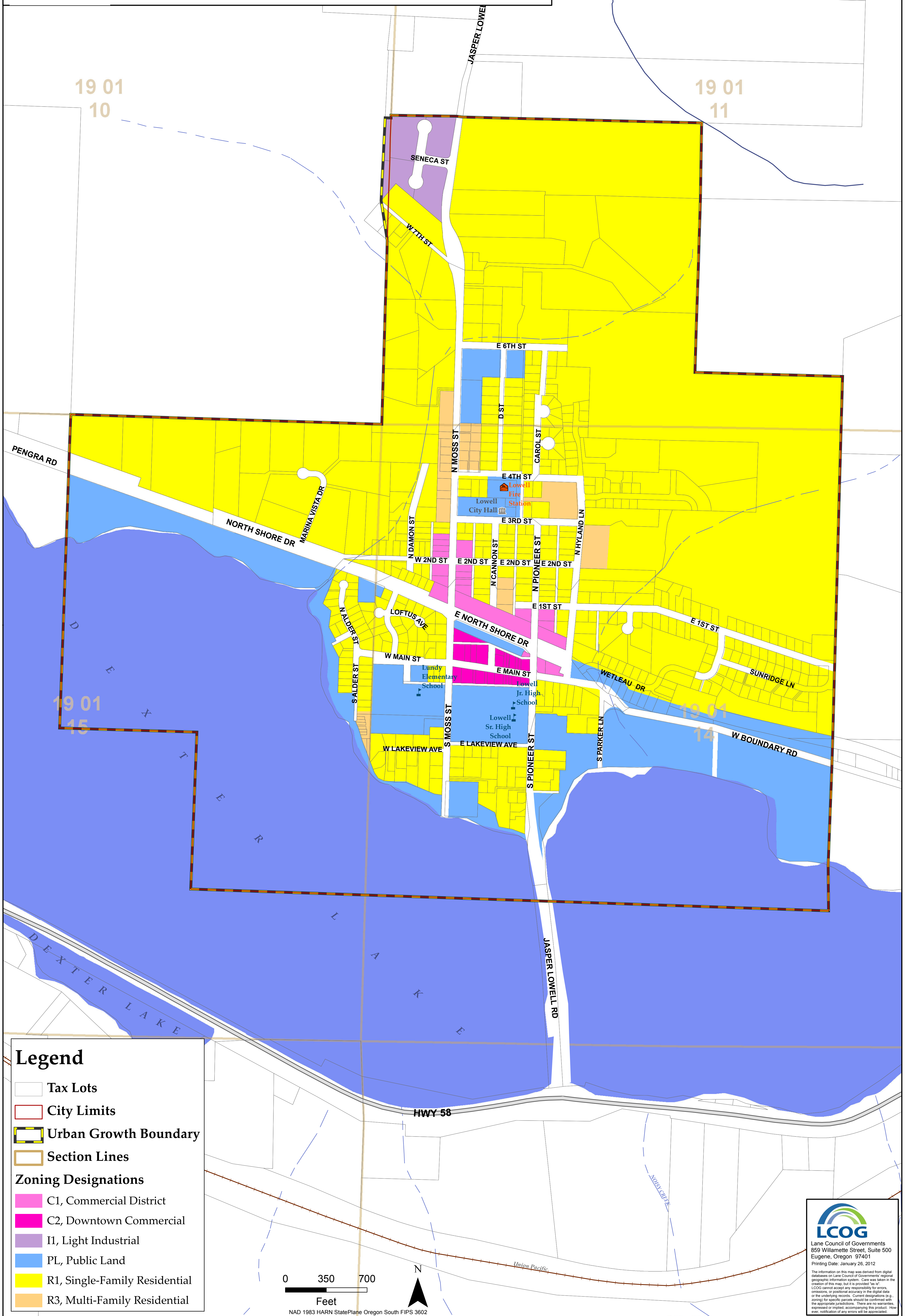




Lowell Zoning Districts



Legend

- Tax Lots
- City Limits
- Urban Growth Boundary
- Section Lines
- Zoning Designations**
- C1, Commercial District
- C2, Downtown Commercial
- I1, Light Industrial
- PL, Public Land
- R1, Single-Family Residential
- R3, Multi-Family Residential

0 350 700
Feet



NAD 1983 HARN StatePlane Oregon South FIPS 3602



Lane Council of Governments
859 Willamette Street, Suite 500
Eugene, Oregon 97401
Printing Date: January 26, 2012

The information on this map was derived from digital databases on Lane Council of Governments' regional geographic information system. Care was taken in the creation of this map, but it is provided "as is". LCOG cannot accept any responsibility for errors, omissions, or positional accuracy in the digital data or the underlying reports. Current designations (e.g., zoning) for specific parcels should be confirmed with the appropriate jurisdictions. There are no warranties, expressed or implied, accompanying this product. However, notification of any errors will be appreciated.